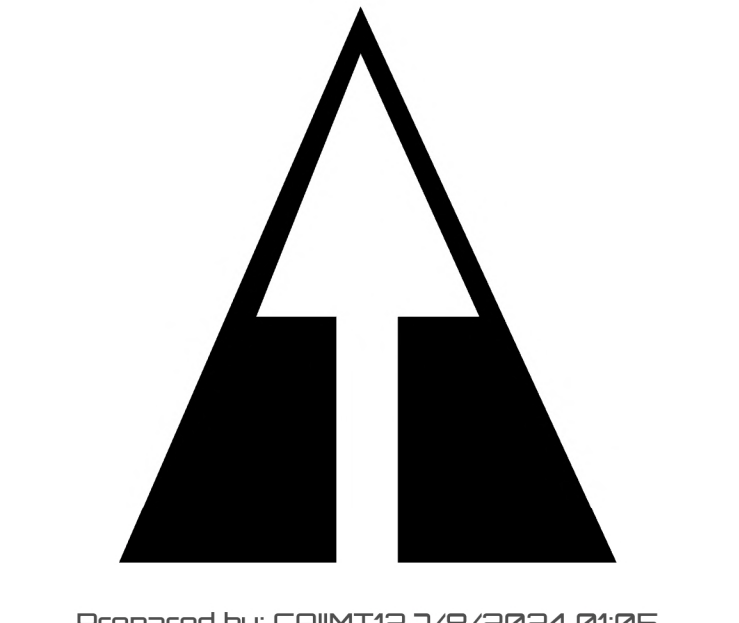
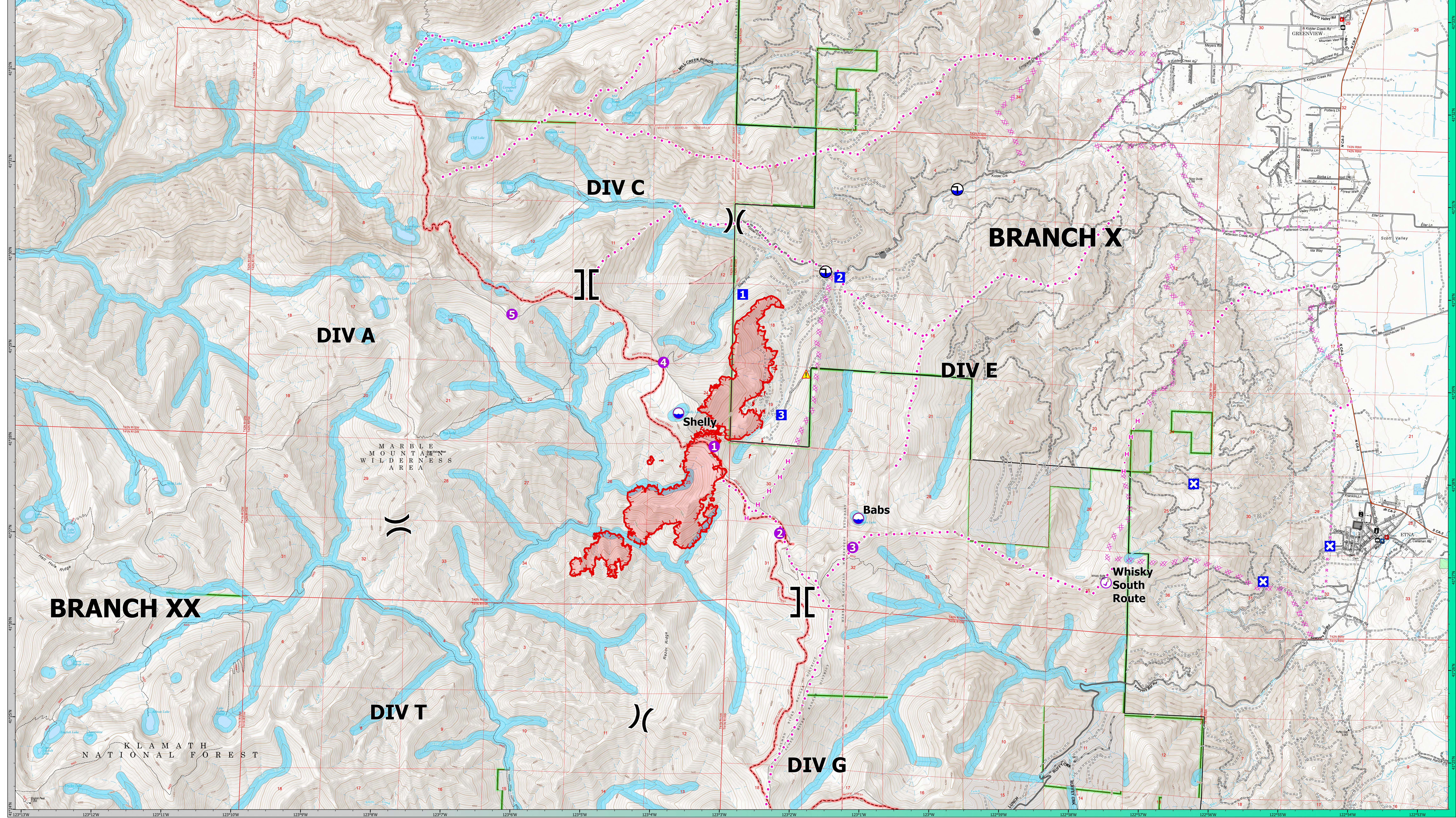


FC Point Type	Label	Latitude WGS84 DDM	Longitude WGS84 DDM
Aviation Check Point	Whisky South Route	41° 26.833' N	122° 57.564' W
Dip Site	Babs	41° 27.444' N	123° 01.140' W
Dip Site	Shelly	41° 28.520' N	123° 03.769' W
Drop Point	1	41° 29.825' N	123° 02.904' W
Drop Point	2	41° 30.042' N	123° 01.519' W
Drop Point	3	41° 28.536' N	123° 02.294' W
Helispot	1	41° 28.170' N	123° 03.243' W
Helispot	2	41° 27.257' N	123° 02.263' W
Helispot	3	41° 27.129' N	123° 01.209' W
Helispot	4	41° 29.062' N	123° 04.008' W
Helispot	5	41° 29.528' N	123° 06.203' W



<ul style="list-style-type: none"> <li>Retardant Avoidance</li> <li>Aviation Check Point</li> <li>Helispot</li> <li>Division Break</li> <li>Branch Break</li> <li>Drop Point</li> <li>Closure</li> <li>Other</li> <li>Gate</li> <li>Hazard</li> </ul>	<ul style="list-style-type: none"> <li>Dip Site</li> <li>Draft Site</li> <li>Completed Dozer Line</li> <li>Planned Dozer Line</li> <li>Planned Hand Line</li> <li>Planned Road as Line</li> <li>Proposed Line</li> <li>Access Route</li> <li>Uncontaminated</li> <li>Wildfire Daily Fire Perimeter</li> </ul>	<ul style="list-style-type: none"> <li>Gap, Summit</li> <li>Cemetery</li> <li>City / Town Hall</li> <li>School (K - 12)</li> <li>Post Office</li> <li>Fire Station / EMS Station</li> <li>Law Enforcement</li> <li>Secondary Highway</li> <li>Road, Unspecified</li> <li>Road, Paved</li> </ul>	<ul style="list-style-type: none"> <li>Road, Dirt</li> <li>National Trail</li> <li>Trail</li> <li>National Designated Trail</li> <li>USFS Proclaimed Forest Grassland</li> <li>USFS Wilderness</li> <li>USFS Administrative Forest</li> <li>County CENSUS</li> <li>City Incorporation - etc</li> <li>USFS Wild Scenic River</li> </ul>	<ul style="list-style-type: none"> <li>Spring/Seep</li> <li>Waterfall</li> <li>Well</li> <li>Lake / Pond</li> <li>Lake / Pond (Intermittent)</li> <li>Reservoir</li> <li>Wash</li> <li>Artificial Path</li> <li>Canal / Ditch</li> <li>Pipeline</li> </ul>	<ul style="list-style-type: none"> <li>Stream/River</li> <li>Stream/River Intermittent</li> <li>USFS Ranger District</li> <li>Non Forest</li> <li>Structure FEMA</li> <li>Ownership</li> <li>City</li> <li>Federal</li> <li>Tribal</li> </ul>
---	---	---	--	--	---

# AIR OPERATIONS

## SHELLY

CA-KNF-005159

07/08/24



SHELLY

CA-KNF-005159

# AIR OPS

07/08/24

