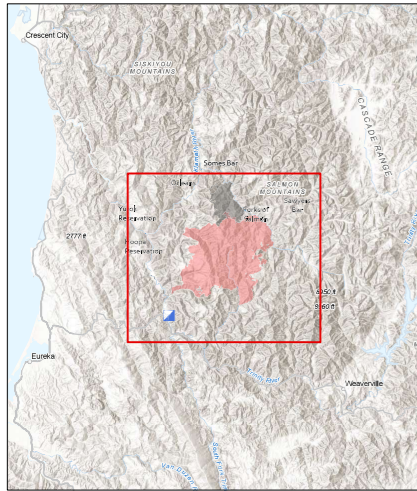


# Public Information Map

## Red Salmon Complex

CA-SRF-000656

October 21, 2020



- Legend**
- Wildfire Perimeter
  - National Forest Fire Area Closures
  - Road Closures
  - Uncontrolled Fire Edge
  - Contained Line
  - Butler Fire
  - Event Point
  - FC Point Type
  - Incident Command Post
  - Event Point
  - Division Break

Portions of the National Forests are open for public use. Contact: <https://www.fs.usda.gov/klamath> or <https://www.fs.usda.gov/srnf> or <https://www.fs.usda.gov/stnf>

