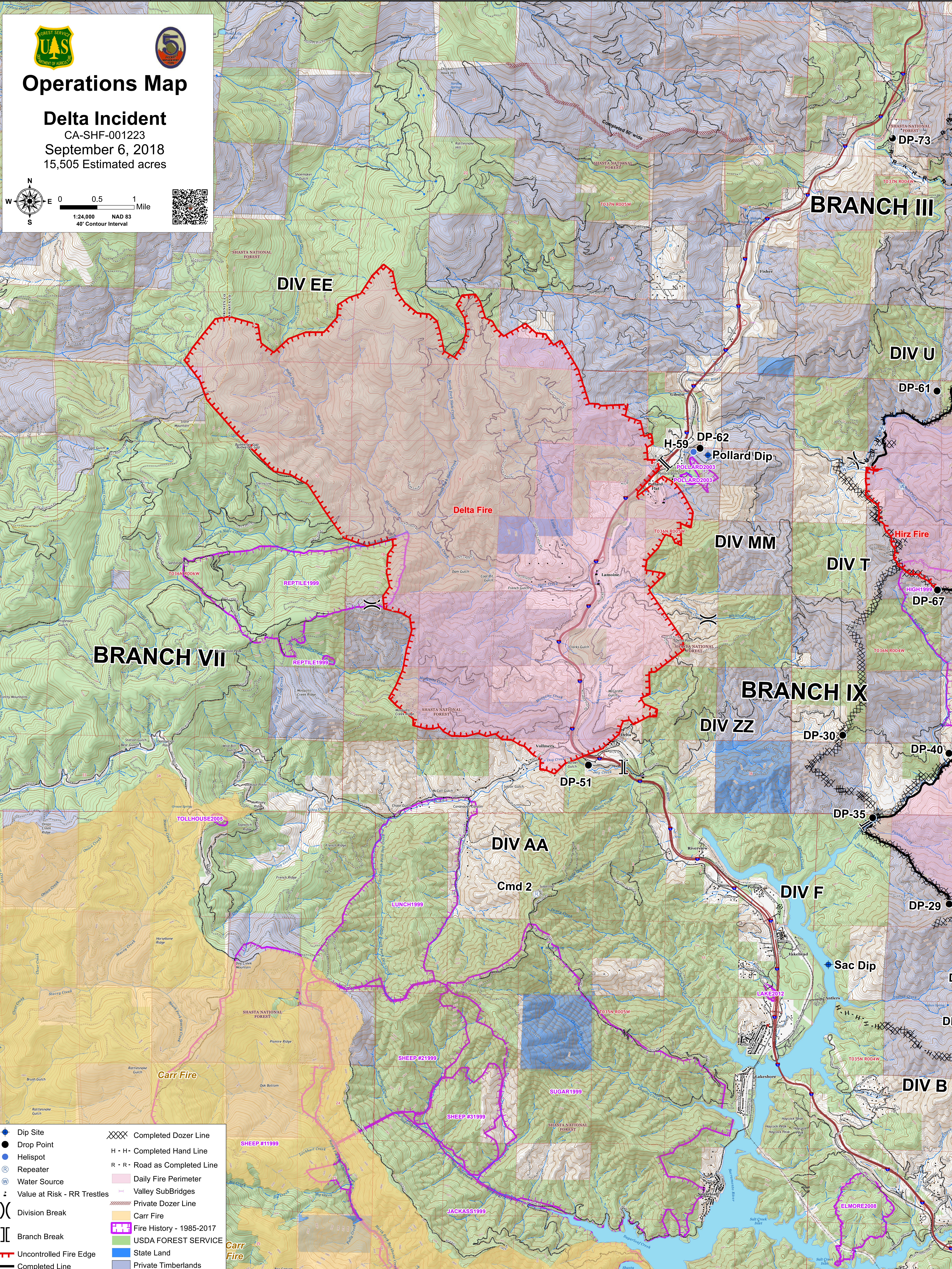


122°35'W 122°34'W 122°33'W 122°32'W 122°31'W 122°30'W 122°29'W 122°28'W 122°27'W 122°26'W 122°25'W 122°24'W 122°23'W 122°22'W 122°21'W



Operations Map

Delta Incident
CA-SHF-001223
September 6, 2018
15,505 Estimated acres

Scale: 1:24,000 NAD 83 40' Contour Interval

0 0.5 1 Mile

QR Code

- Dip Site
- Drop Point
- Helispot
- Repeater
- Water Source
- Value at Risk - RR Trestles
- Division Break
- Branch Break
- Uncontrolled Fire Edge
- Completed Line
- Completed Dozer Line
- H - H - Completed Hand Line
- R - R - Road as Completed Line
- Daily Fire Perimeter
- Valley SubBridges
- Private Dozer Line
- Carr Fire
- Fire History - 1985-2017
- USDA FOREST SERVICE
- State Land
- Private Timberlands

122°34'W 122°33'W 122°32'W 122°31'W 122°30'W 122°29'W 122°28'W 122°27'W 122°26'W 122°25'W 122°24'W 122°23'W 122°22'W 122°21'W